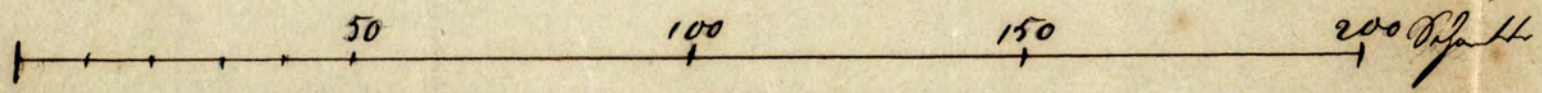


Plan ciertosa z roku 1866 gnezd. J. 1866
Halzera gonoratry, d. 1/8 1875 Paiv budovnerem
mijit emu Vseinnikem ^{do} mysnovance
Jozjellu shavnia umenlych, gorjysovo

[Signature]

Sept 1866



Plan sytuacyjny cmentarza w Bzessowie 1866

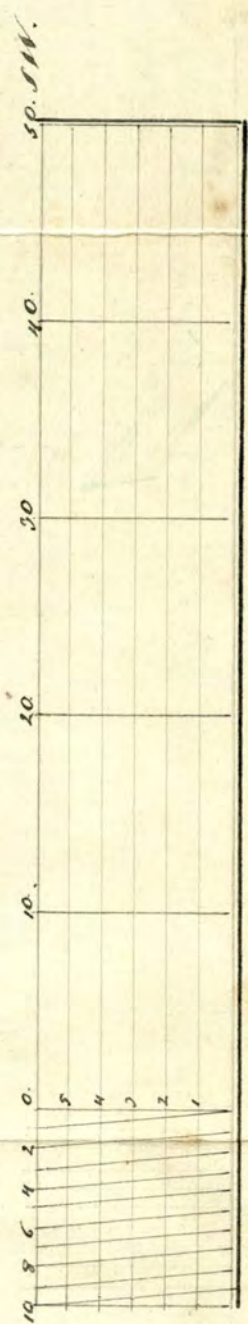
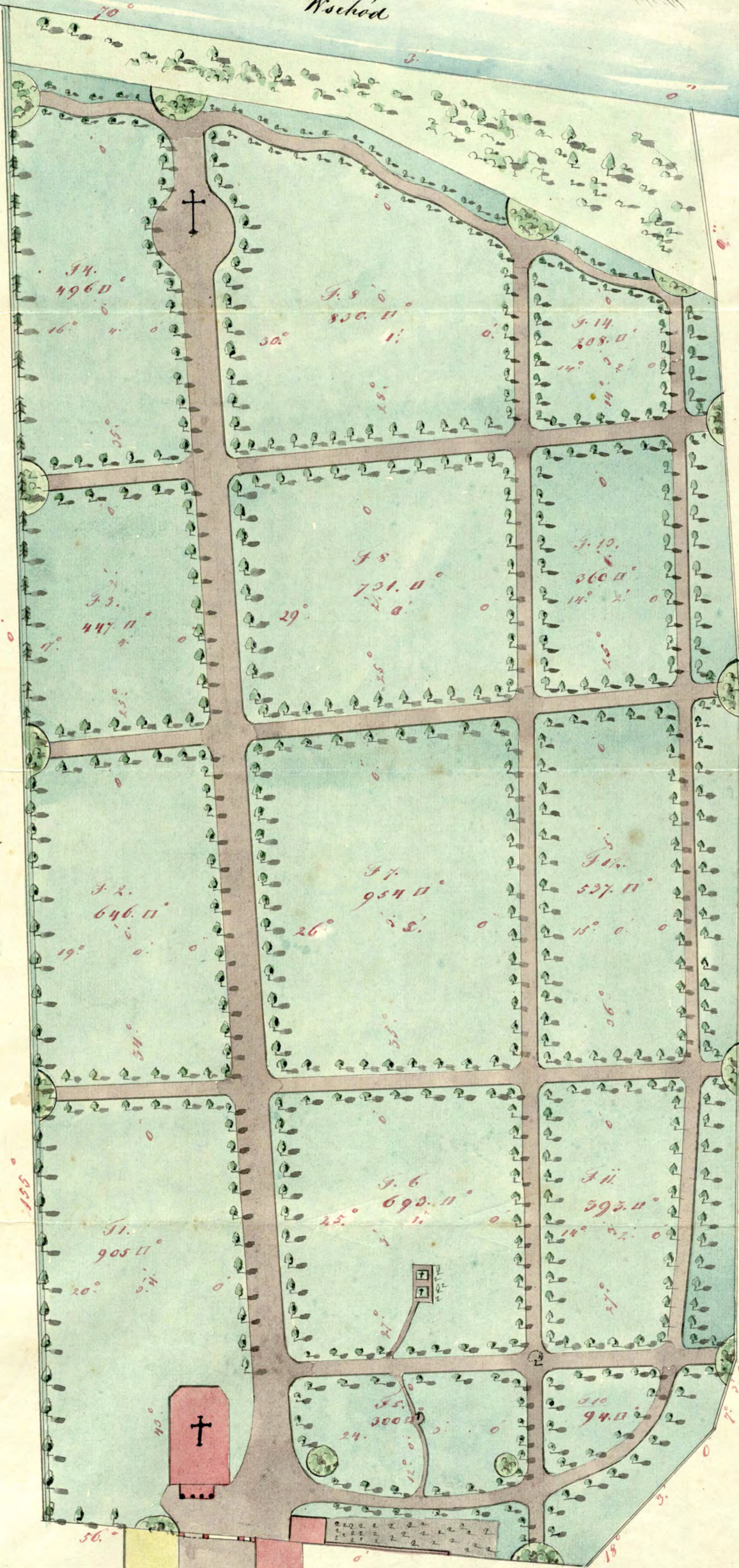


Wschód

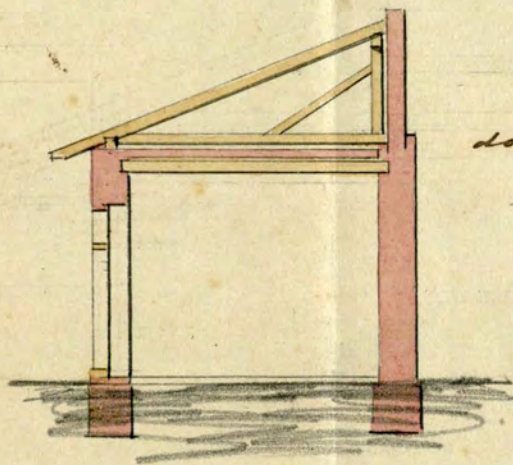
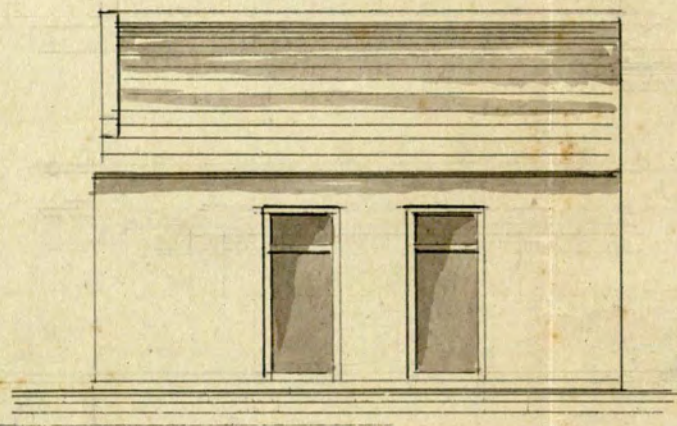
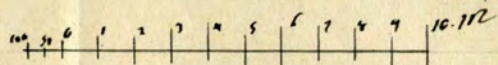
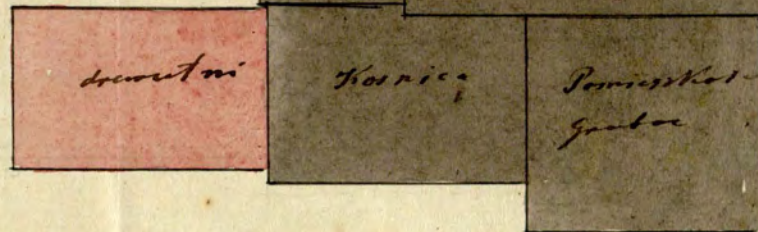
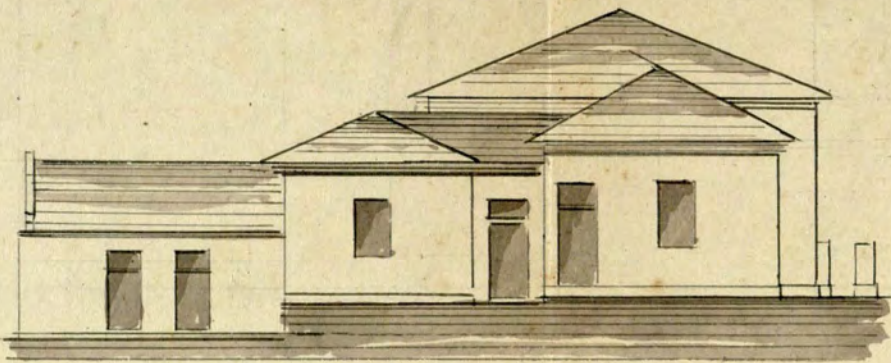
Lotno

Polownie

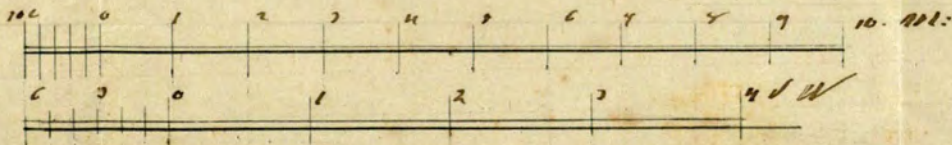
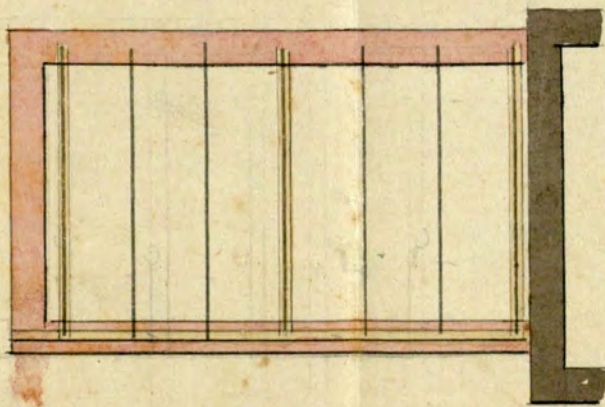
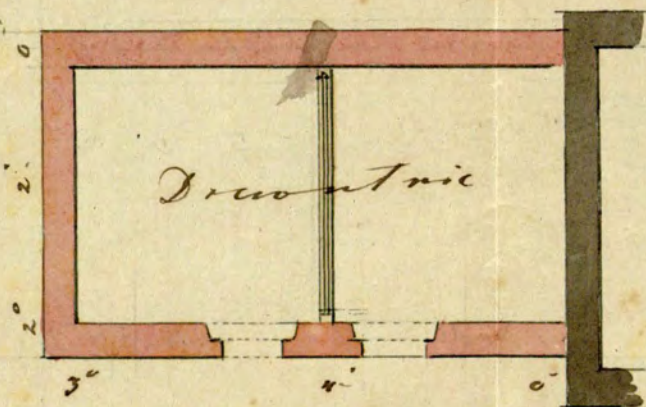
Zachód



Juliusz Holczer

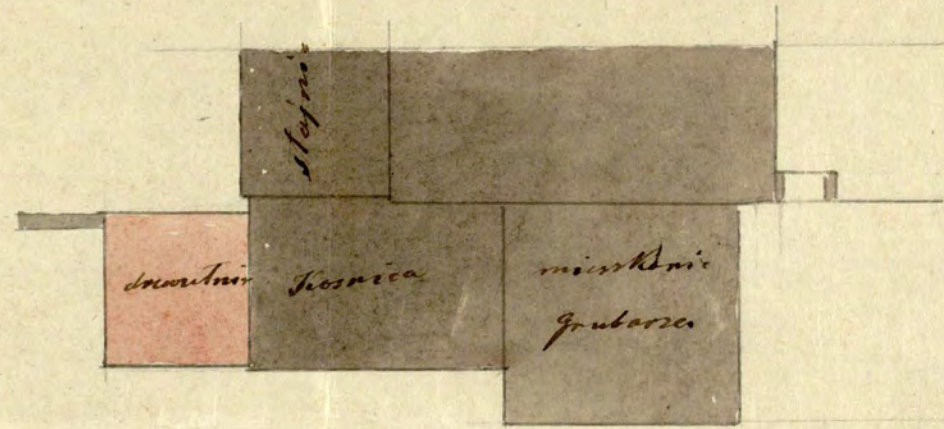
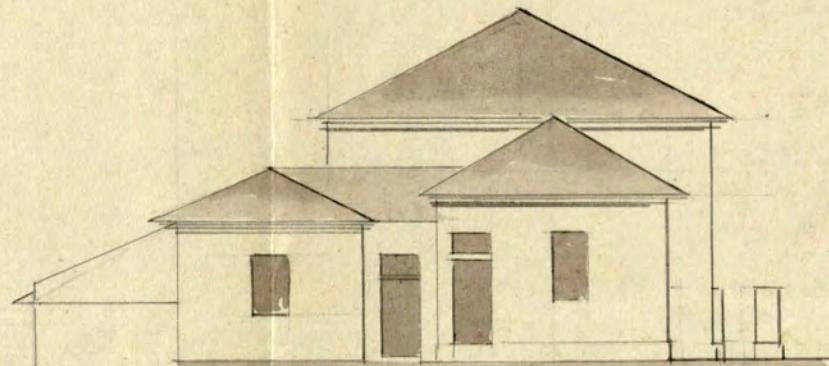


Plan
do wystawienia dachu
wewnątrz na Caortan
w Pleszowie.

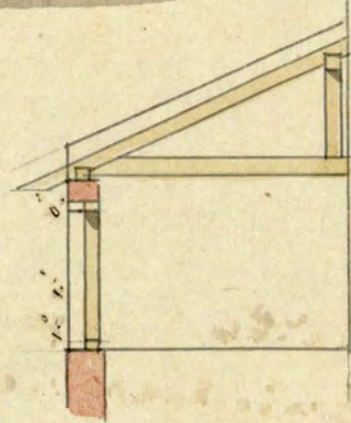


Jakob Holzer

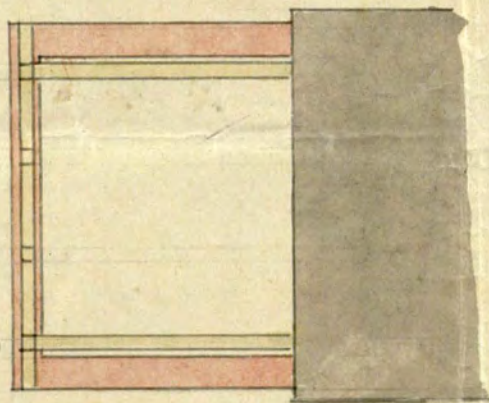
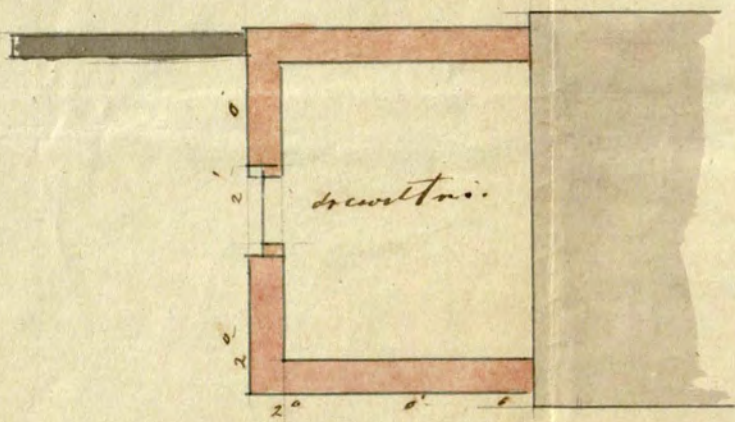
P. L. B.



0 1 2 3 4 5 6 7 8 9 10 m.



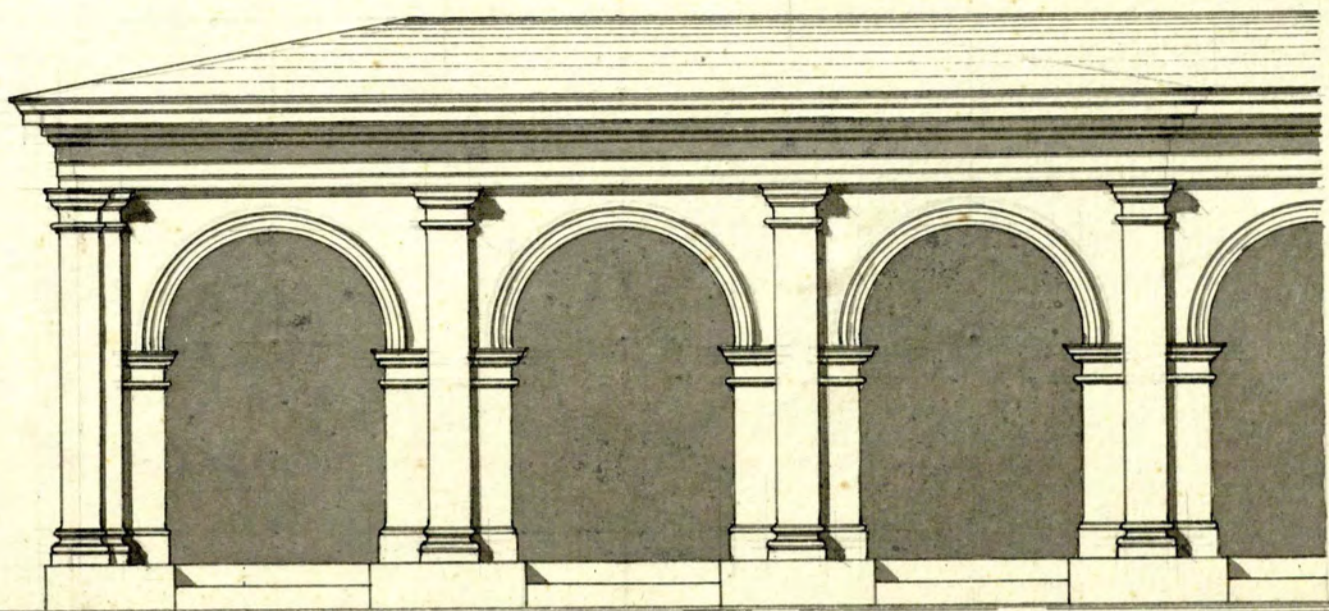
Plan
do wystawienia dr.,
wulni na cementowa
w.
Przeszowiec.



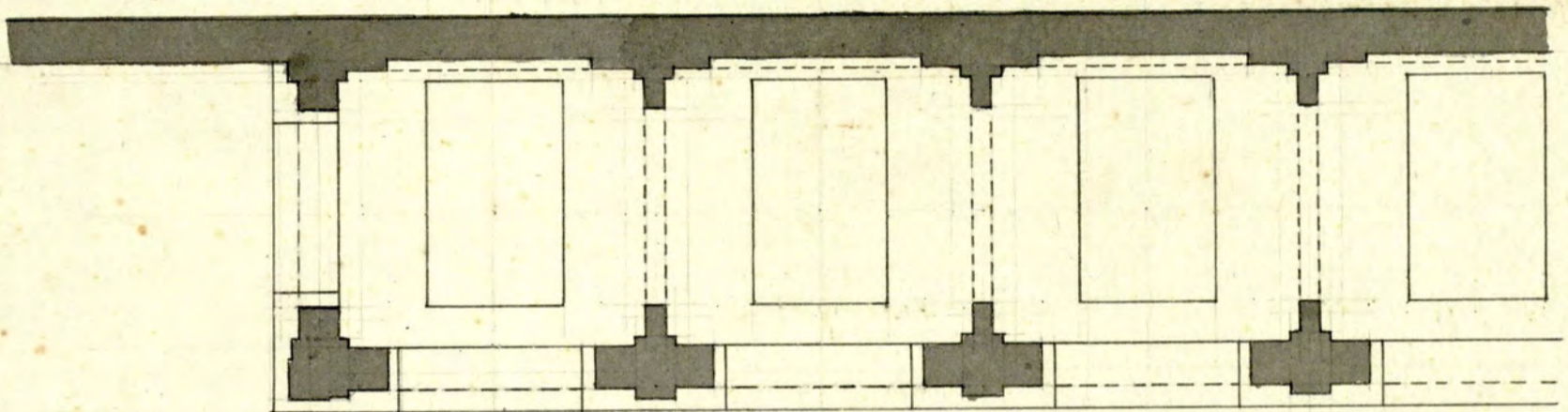
0 1 2 3 4 5 6 7 8 9 10. m.
6 3 0 1 2 2 4 m.

J. Holzer

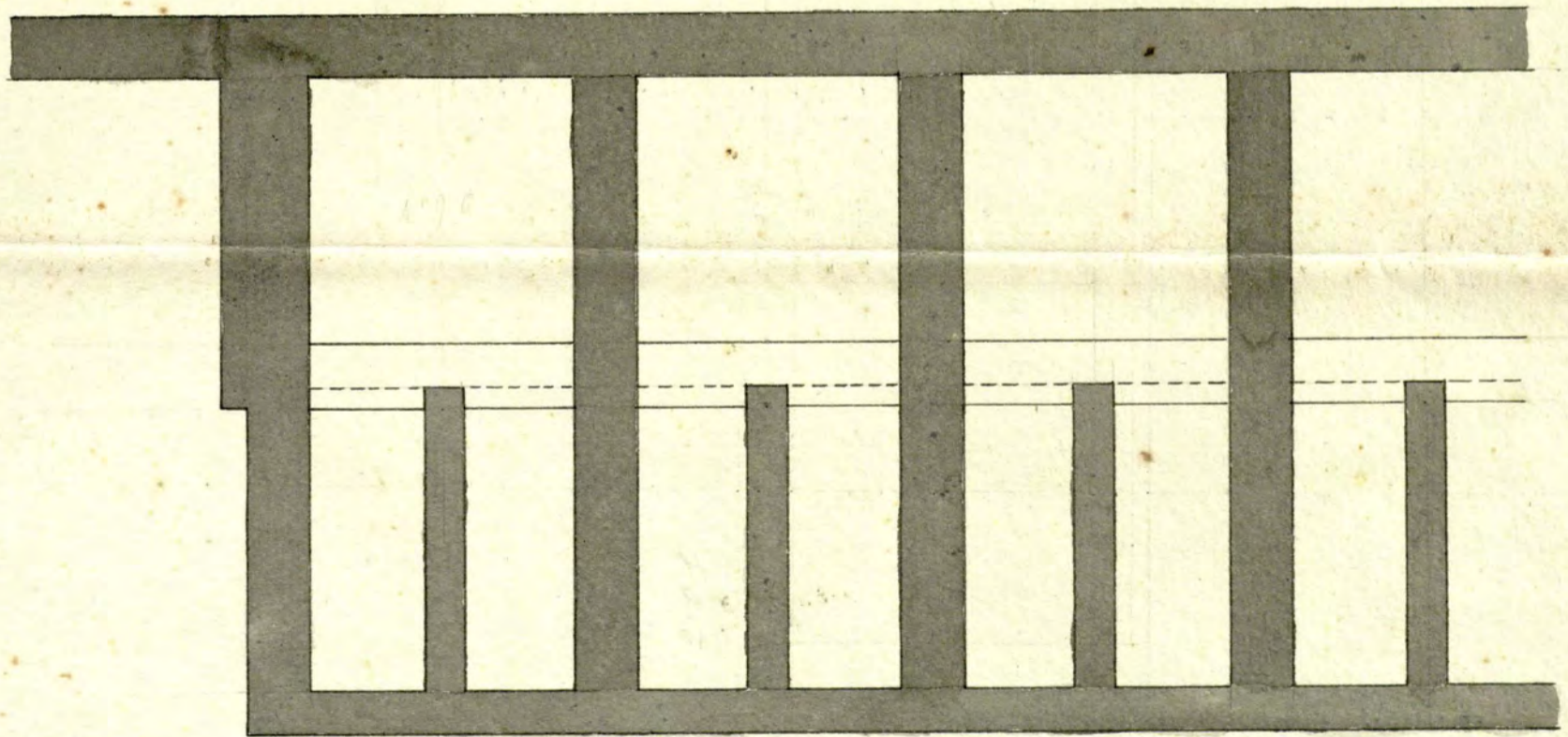
Szkic na grobowce familijne.



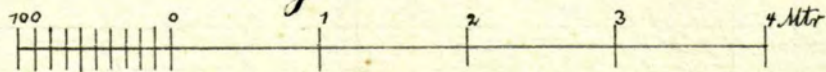
Elewacya.



Parter.



Grobowce.



Ludwik Holzer 1881
Architekt



360 m²

a 1/20 = 5/6